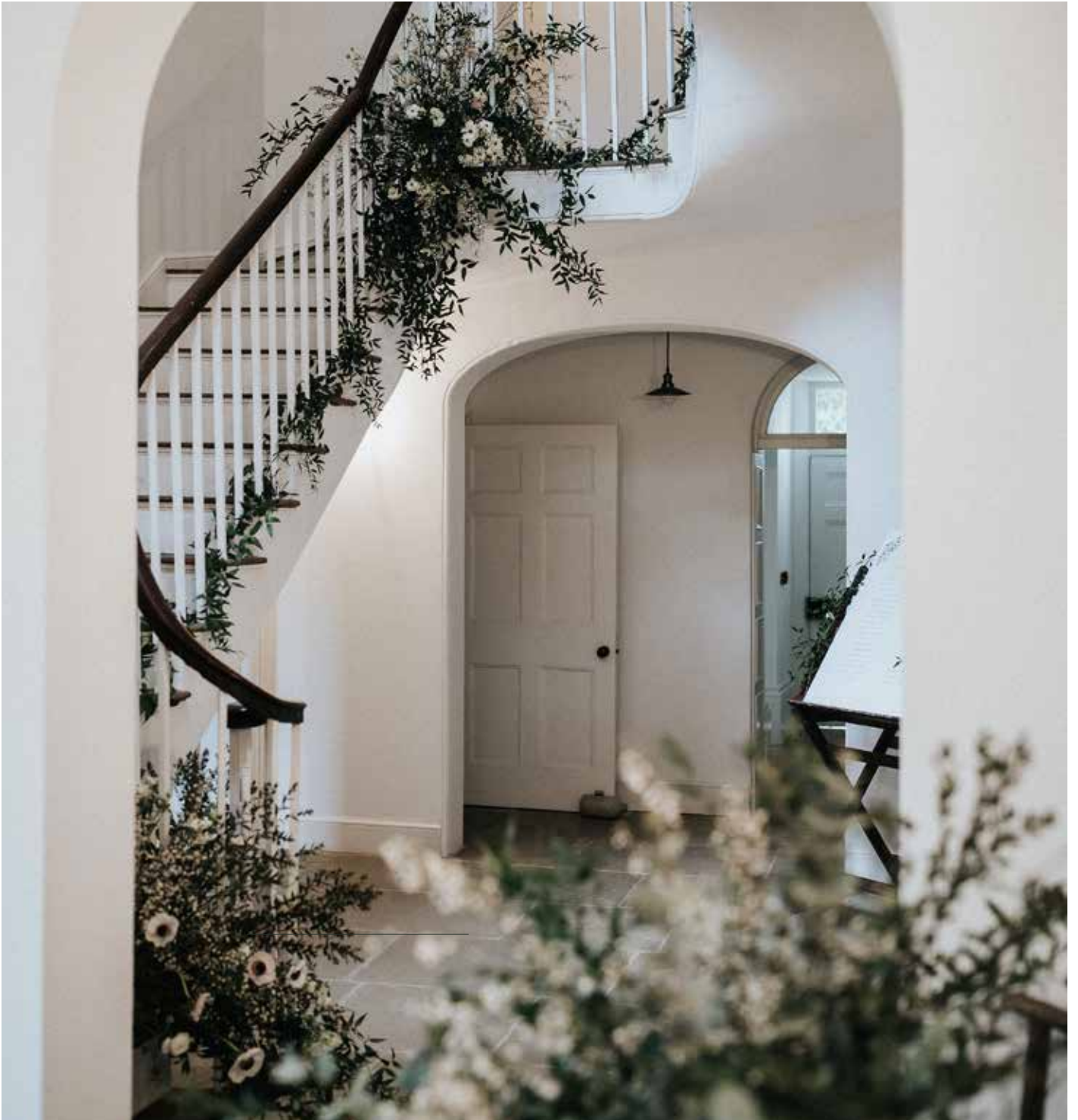


# A S W A R B Y R E C T O R Y

ALL KINDS OF LOVELY





Our home is yours. From the moment you walk through the door here, we hope you see the thoughtful and authentic place we set out to be.

In late 2016 we bought a crumbling Georgian house and with our young family in tow, set about restoring it to its former self. It had the bones of something very special and we are so lucky to have been able to bring it back to life.

All along we have been driven by the desire to create a simplistic and beautiful space in which you can share your most special memories. Unpretentious and with a focus on only the important things that really make for the most effortless experience, as so often the roots of the most special memories are grown out of the simplest moments with the ones you cherish.

welcome





Built in 1820, Aswarby Rectory is situated in stunning open countryside, on the edge of a private estate and surrounded by 9 acres of private gardens and paddock land.

Formally a private home, and earlier to that the Rectory to the Church next door, the house has undergone a sympathetic, yet extensive, programme of renovation, launching as an exclusive use space in the Summer of 2018 and hosting a limited number of weddings and gatherings each year since.





## how it works

Aswarby Rectory is hired on an exclusive basis (from 9am until 10am the following morning) for both indoor and outdoor civil ceremonies and related gatherings, meaning you get sole use of the house and grounds for the duration of your stay with us.

We have the ability to hold both midweek and weekend gatherings and have a flexible approach to the flow of a day, meaning you can create an experience that is unique and personal to you.

We ask that you use one of our approved caterers for your arrival, reception and wedding breakfast requirements to ensure that your day runs perfectly. They will cover all aspects of your catering and service needs. We are, however, open to alternative suppliers coming onto site for your evening catering. Please talk to us for details.

We allow you to supply your own drink which will be served by your caterer until the end of the wedding breakfast. All we ask is that once the wedding breakfast has finished, you use our evening bar.

Everything else is up to you, but please let us know if you would like us to point you in the direction of some very talented suppliers.

If you are looking to hold an alternative event please get in touch, we may be able to help you with your individual needs.









## what is included

- The exclusive use of Aswarby Rectory for the duration of your stay, with capacity for 80 daytime guests and 120 evening guests.
- Three areas licensed for civil ceremonies, both indoor and outdoor (registrar to be booked and paid for separately).
- A no corkage fee policy. We are happy to allow your own drink to be served by your caterer until the end of the wedding breakfast. All we ask is that once the wedding breakfast has finished you use our evening bar.
- 8 bedrooms including a beautiful bridal suite, all of which can be used exclusively by you and your guests for the night of your wedding (a maximum of 2 adults per room). We can also accommodate a few additional children, with travel cots for children up to 2 years of age available if required. Please speak to us with specific requirements, we'll do our best to help.
- A choice of either round or trestle style tables and rustic wooden chairs.
- The use of our accessories here within the house.
- Our multi-room speaker system for your playlists.
- The gardens and grounds, a perfect backdrop for photos.
- A locally sourced continental breakfast the morning after your stay for all overnight guests.
- Our expertise and support, both during your planning and on the day, to ensure everything runs perfectly.
- Except for our approved caterers, everything else is up to you, giving you the opportunity to create a day that is truly bespoke.



## a typical day

9am Access to the house

10am - 12pm Overnight guests arrive and are shown to their bedrooms

1:30pm Remaining day guests arrive

2pm Ceremony

2:30pm Drinks Reception with Canapes, the perfect opportunity for photographs

3:45pm The wedding party take their seats for the wedding breakfast

4pm - 6.30pm Wedding Breakfast

7pm Welcome your evening guests and time for additional photographs

8pm Let the music and dancing begin

9pm Time to enjoy the evening food before more dancing

11:00pm The bar and music come to an end

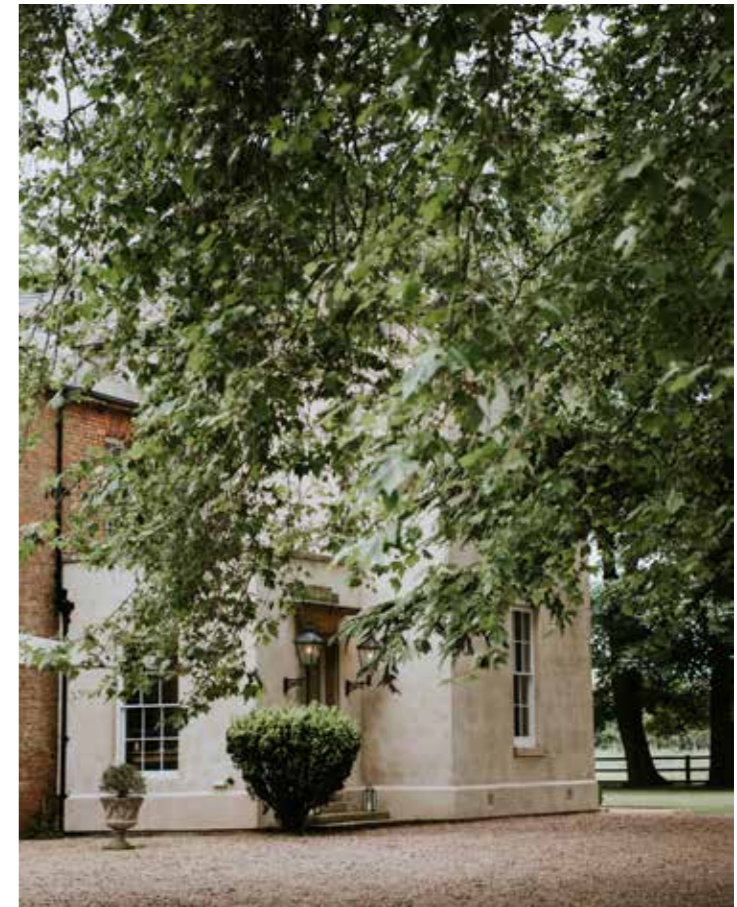
11:30pm All non-resident guests to have made their way home

8am - 9am Head to the orangery for our locally sourced continental breakfast

10am Time to leave Aswarby Rectory and say your farewells

This is just an example and is intended to help as a guide. Many of our gatherings flow differently to this, so please feel free to discuss your plans and hopes with us.

There is also the option of an extended evening licence to 12pm, with all non-resident guests departing by 12.30am. Please ask for details.







## where we are

Aswarby Rectory is situated in the small and attractive Conservation Estate village of Aswarby, with traditional parkland at its core. The majority of the properties surrounding it are character listed buildings including the Grade 1 listed St Deny's church next door, to which we have a private wooded walk.

Aswarby is situated 250 yards from the main A15 trunk road linking North and South Lincolnshire and only 15 mins from the A1 making it a very accessible location. The market town of Stamford is only 30 mins south whilst the cathedral city of Lincoln is 30 mins to the north. The large towns of Grantham and Sleaford are only a short drive away meaning there is plenty of extra accommodation nearby for those travelling to us.



Photography credits: Matt Horan, Rosie May Kelly, The Curries, Agnes Black, Daisy Rose Price



@aswarbyrectory

For more information please visit  
[www.aswarbyrectory.com](http://www.aswarbyrectory.com)

Call: 01529 455578 Email: [enquiries@aswarbyrectory.com](mailto:enquiries@aswarbyrectory.com)  
Aswarby Rectory, Aswarby, Lincolnshire. NG34 8SB